



Global Coverage,
Two-way Satellite,
Real-time, Rugged, Remote

Security / Transportation / Operations

Resource Allocation • Safety • Compliance • Efficiency



G4S Wackenhut

"We have used Fleet Management Solutions since late 2006 across roughly 2,500 miles of US border. FMS has proven itself useful and particularly helpful with maintenance oversight and monitoring driver performance."

-Kevin Johnson, VP Government Services, G4S Wackenhut

Background

G4S Wackenhut is the leading provider of quality, customer focused security solutions in the United States. With over 35,000 employees and more than 100 field offices in the U.S., the company provides its industry-leading integrated security and related services to local, regional and national customers. As a subsidiary of G4S, they are also able to meet the global needs of customers in more than 100 countries.

Challenge

- » U.S. Customs and Border Protection (CBP) allocation of fleet vehicles for effective operations
- » Tracking of mission critical assets, security personnel and detainees in remote regions
- » Managing risks associated with out of policy transportation operations
- » Proving compliance and enforcement of CBP mandates

Solution

Resource Allocation

Appropriate transportation resource allocation is mission critical in the coordination of detention and removal of detainees. Efficient transportation by G4S Wackenhut frees up CBP officers and agents to perform law enforcement duties. More accurate route scheduling, shift deployment and rapid field response are enabled by FMS, supporting 3200 apprehensions per day for U.S. Southwest border operations.

Safety and Security

Vehicle use policies are managed and enforced with Fleet Central tracking. This reduces risk and costs associated with out of policy vehicle operations. FMS helps G4S Wackenhut to monitor employee performance against safety regulations related to speed, location and vehicle idling. Excessive speeds, unauthorized use and other violation alerts are sent to managing personnel via email. Also, regular location updates provide evidence of routes traveled.

Compliance

G4S Wackenhut remotely manages their assets and holds officers accountable for compliance with corporate fleet policies. As an authorized user of Fleet Central, the Customs and Border Protection has visibility to the entire fleet and can monitor sector activities including all historical data for each van and bus. This operations transparency is important for contract performance validation and 100% customer satisfaction was achieved in a recent G4S Wackenhut evaluation by the CBP.

Operational Efficiency

Travel based alerts insure that maintenance programs are carried out on a regular basis providing the maximum life cycle for vans owned by G4S Wackenhut. Reduction in idle time and elimination of unauthorized use reduces vehicle wear and tear. It also contributes to their programs for reducing emissions overall.



Results

"It is now evident the decision to use FMS was prudent."

Kevin Johnson,
VP Government Services,
G4S Wackenhut

Corporate Offices

Fleet Management Solutions
3426 Empresa Drive
San Luis Obispo, CA 93401

Contact Us

Tel: 1.888.787.0508
Fax: +1.805.787.0509
Email: info@fmsgps.com
Web: www.fmsgps.com



Client satisfaction, results and continuous return on investment begin with quality training and installation support.

FMS works closely with every client to ensure system installation and deployment is complete and on schedule.

With an online knowledge base and truly helpful documentation you may never encounter a problem you can't solve yourself. But if you do, FMS is just a phone call away.



Ready for a live system demonstration?

To request a live demo, or if you have any questions, visit www.fmsgps.com/contact.aspx

Complete the contact form and a qualified FMS representative will respond promptly.



Benefits achieved by G4S Wackenhut

Customer Satisfaction

Total compliance with operational performance expectations has been achieved

Support for Client Success

U.S. Customs and Border Protection have the transportation support they need to be effective

Operations Efficiency

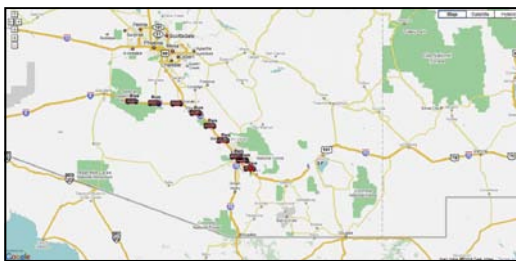
Office and agent compliance with policies has improved the quality and reduced the cost of operations

Competitive Advantage

FMS has helped G4S Wackenhut to meet all contract terms and become a trusted supplier

Fleet Central provides G4S Wackenhut with Accurate Operations Data and Compliance

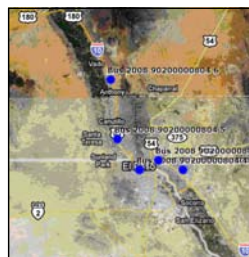
Behind all the benefits provided to G4S Wackenhut is FMS Fleet Central. All fleet management tools and administration are available via web browser and supported by the secure FMS network operation center. Create landmarks, boundaries, program alerts, run reports, and enhance fleet efficiency from Fleet Central.



Remote Asset Tracking

Location Awareness, Anywhere, Anytime

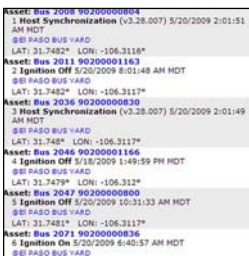
Location knowledge is key to operational efficiency and satellite communications is the key. FMS maps with landmark and rolling asset views assist fleet operations teams make better decisions, faster.



Route Monitoring

Operations Management and Enforcement

Knowing when expensive fleet assets arrive or leave a location or landmark can save time and money. Policy abuse and unauthorized use can be immediately reported for response and policy enforcement.



Efficient Resource Allocation

Appropriate Deployment of Vehicles

Managing large teams in remote areas can be costly and ineffective without current and accurate knowledge. Mission success and best use of resources depends on proper and timely communications with the fleet.

About Fleet Management Solutions, Inc.

Fleet Management Solutions provides GPS and all-satellite fleet tracking and monitoring with 100% remote coverage and two-way communications. FMS manufactures rugged and reliable on-board equipment and web-based mapping and reporting tools. FMS clients improve asset utilization, safety, and productivity while reducing theft and the costs associated with fleet operation, management, insurance and deployment. FMS is a total solution provider for all fleet tracking requirements, including satellite communications services.

