

888-787-0508  
 +1-805-787-0508  
 www.fmsgps.com

Reduce risk, improve safety and security, and optimize fleet operations with real-time, two-way satellite fleet management.

Review the options presented here to determine the most appropriate antenna for MLT-400i applications using the Iridium satellite network.

### ANTIR 01



#### Dimensions

3.5 x 2.25 x 0.75in  
 (8.9 x 5.7 x 1.9cm)

#### Mounting Style

Permanent

#### Ground Plane Required?

No

- High performance
- Low profile
- Tamper resistant design
- Durable high performance construction for the most rugged environments

### ANTIR 02



#### Dimensions

7 x 2 x 5in  
 (17.8 x 5.1 x 12.7cm)

#### Mounting Style

Suction Cup  
 Window Mount

#### Ground Plane Required?

No

- Low profile
- Good for rental vehicles
- Easy installation (single mounting hole)
- May be installed without suction mount

### ANTIR 03



#### Dimensions

4.9 x 3.1 x 0.75in  
 (12.4 x 8 x 1.9cm)

#### Mounting Style

Permanent

#### Ground Plane Required?

No

- High performance
- Easy installation (single mounting hole)
- Cost effective

Fleet Management Solutions provides complete mobile asset tracking and management solutions, from its vehicle tracking modules to its web-based mapping software.



### FMS Technical Support & Professional Services

Client satisfaction, results and continuous return on investment begin with quality training and installation support.

FMS works closely with every client to ensure system installation and deployment is complete and on schedule.

With an online knowledge base and truly helpful documentation you may never encounter a problem you can't solve yourself. But if you do, FMS is just a phone call away.



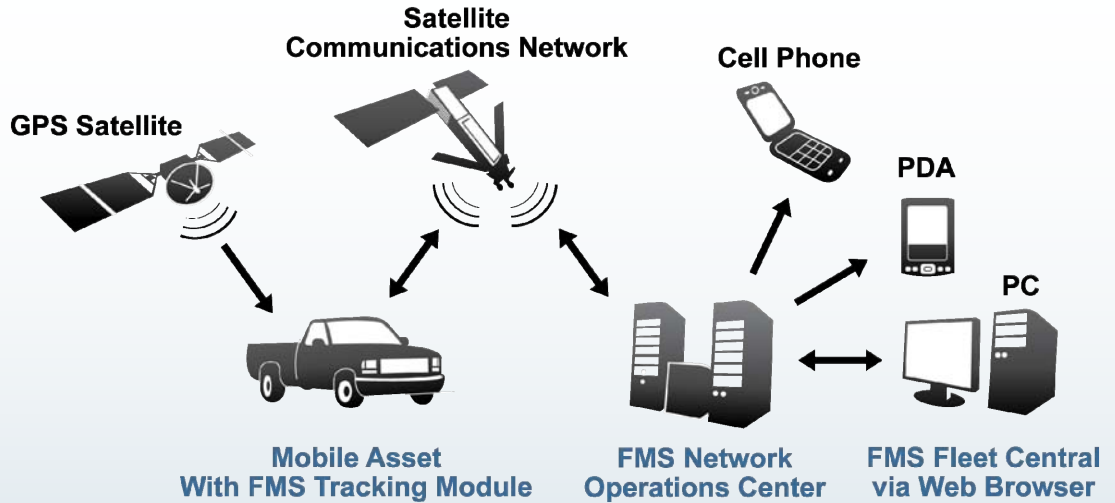
### Corporate Offices

Fleet Management Solutions  
3426 Empresa Drive  
San Luis Obispo, CA 93401

### Contact Us

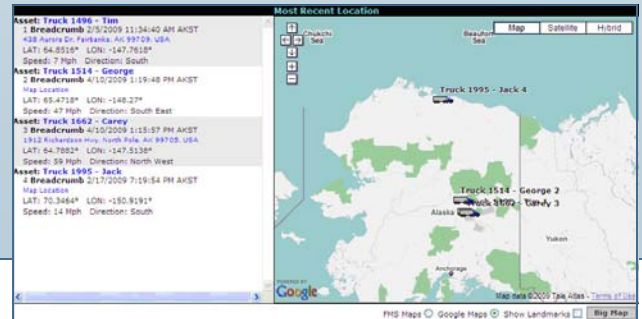
Toll-Free: 1-888-787-0508  
Tel: +1-805-787-0508  
Fax: +1-805-787-0509  
Email: info@fmsgps.com

[www.fmsgps.com](http://www.fmsgps.com)



## Real-Time Data From Anywhere, Anytime

FMS tracking modules maintain continuous GPS location, direction and speed information and combine that with vehicle performance data for complete mobile resource management. Fleet information is delivered from the vehicle via satellite, ensuring data delivery without need for cell towers and regardless of land geography. Data is received, stored and analyzed at the FMS network operations center and is accessed from the FMS hosted application, Fleet Central.



## Why Choose FMS?

Fleet Management Solutions, Inc. provides complete mobile asset tracking and management solutions to the Energy, Military, Government, Construction, Mining and Logistics industries. Solutions include vehicle tracking units, satellite airtime for data transmission, a web-hosted application for complete fleet management and professional services for successful deployment, on-going support, and quick return on investment.

- » Fleet Efficiency
- » Crew Monitoring

- » Driver Safety
- » Asset Security

Global Coverage, Two-way Satellite, Real-time, Rugged, Remote