

MDT-PRO

Message Display Terminal

Reduce risk, improve safety and security, and optimize fleet operations with real-time, two-way satellite fleet management.



888-787-0508
+1-805-787-0508
www.fmsgps.com

Companion Products

MLT-400i
GPS Tracking Module



ANTIR 01
Permanent Mount Antenna



ANTIR 02
Suction Mount Antenna



OBDII
Vehicle Diagnostics



IGNDRA
Ignition Enable/Disable



Capabilities

- » Provides in-cab communications, data capture and data transmission between operators/drivers and office managers/personnel
- » Enhanced screen technology provides clear visibility day or night
- » Designed to survive thermal extremes and vibration
- » Accommodates a wide input power range for vehicle compatibility

Technical Specifications

Power Source:	8–30 Volts
Power Consumption:	12V = 118mA 24V = 65 mA
Size:	2.5 x 3.8 x 1in 6.4 x 9.7 x 2.5cm
Screen Size:	3 x 2.3in 7.6 x 5.8cm
Screen:	320 x 240 pixel FSTN LCD display
Weight:	8.2oz (233g)
Battery:	Lon lasting lithium-ion
Operating Temperature:	-13° to + 140°F -25° to + 60°C
Mounting:	Standard 6 inch (15cm) suction cup or optional permanent bracket
Other Features:	Full numeric keypad, 4-way cursor, backlit function keys, audio annunciator

Fleet Management Solutions provides complete mobile asset tracking and management solutions, from its vehicle tracking modules to its web-based mapping software.



FMS Technical Support & Professional Services

Client satisfaction, results and continuous return on investment begin with quality training and installation support.

FMS works closely with every client to ensure system installation and deployment is complete and on schedule.

With an online knowledge base and truly helpful documentation you may never encounter a problem you can't solve yourself. But if you do, FMS is just a phone call away.



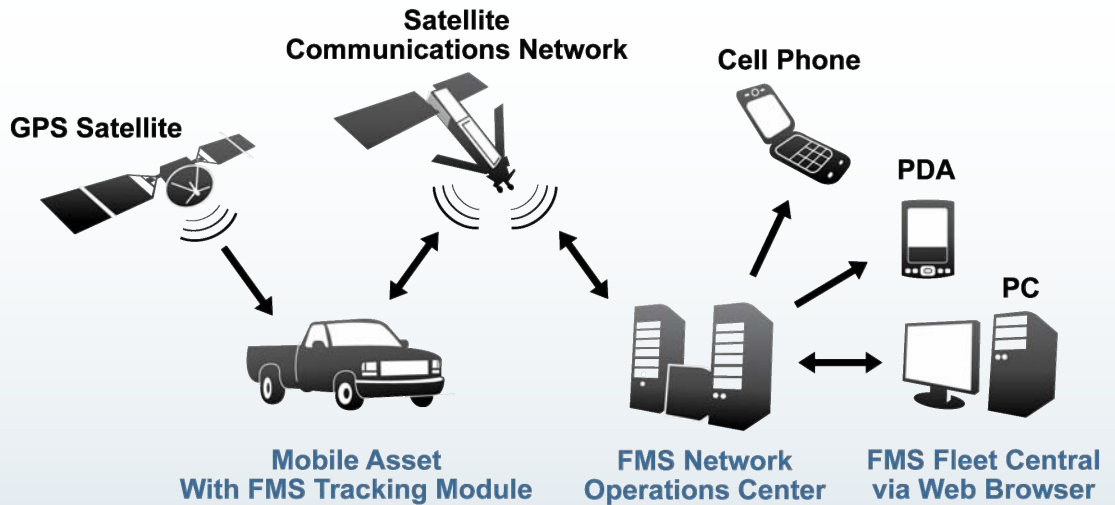
Corporate Offices

Fleet Management Solutions
3426 Empresa Drive
San Luis Obispo, CA 93401

Contact Us

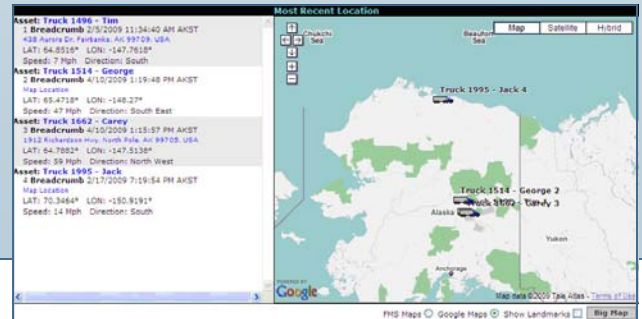
Toll-Free: 1-888-787-0508
Tel: +1-805-787-0508
Fax: +1-805-787-0509
Email: info@fmsgps.com

www.fmsgps.com



Real-Time Data From Anywhere, Anytime

FMS tracking modules maintain continuous GPS location, direction and speed information and combine that with vehicle performance data for complete mobile resource management. Fleet information is delivered from the vehicle via satellite, ensuring data delivery without need for cell towers and regardless of land geography. Data is received, stored and analyzed at the FMS network operations center and is accessed from the FMS hosted application, Fleet Central.



Why Choose FMS?

Fleet Management Solutions, Inc. provides complete mobile asset tracking and management solutions to the Energy, Military, Government, Construction, Mining and Logistics industries. Solutions include vehicle tracking units, satellite airtime for data transmission, a web-hosted application for complete fleet management and professional services for successful deployment, on-going support, and quick return on investment.

- » Fleet Efficiency
- » Crew Monitoring

- » Driver Safety
- » Asset Security

Global Coverage, Two-way Satellite, Real-time, Rugged, Remote