

# TPASS II Transmitter / MR900 Receiver

## Lone Worker—Man Down Solution

Reduce risk, improve safety and security, and optimize fleet operations with real-time, two-way satellite fleet management.



888-787-0508  
+1-805-787-0508  
www.fmsgps.com

### Companion Products

MLT-400i  
GPS Tracking Module



ANTIR01  
Permanent Mount Antenna



MDT-PRO  
Message Display Terminal



OBDII  
Vehicle Diagnostics



IGNDRA  
Ignition Enable/Disable



## TPASS II Transmitter Capabilities

- » Man Down notifications from anywhere in the world using Grace Industries personal life safety products
- » Immediate notification of an employee in distress
- » Motion sensor activated if worker becomes immobile or help button is pressed
- » Audible alarm is activated and signal sent to MR900 Receiver
- » Internal sensor also monitors thermal inertia exposure
- » Up to 1/2 mile range from worker to vehicle

## MR900 Micro Receiver Capabilities

- » Compact radio receiver designed to receive signaling data transmissions from Grace Industries personal life safety products
- » Suitable for use inside a vehicle connected to FMS MLT-400i
- » Supports multiple TPass II users via on one RF receiver
- » Email or SMS notification sent via FMS modem using the Iridium satellite network
- » Refer to FMS man down application note for integration details

## MR900 Micro Receiver Technical Specifications

<b>Power Source:</b>	10 Volts (min) - 20 Volts (max)
<b>Frequency Range:</b>	902-928MHz
<b>Size:</b>	2 x 3 x 0.75in, antenna 3.25in long
<b>Data Output:</b>	RS-232 type, 9600-bps ASCII encoded numeric data
<b>Output Format:</b>	18 bytes total, 5 hexadecimal ASCII encoded data fields, 1 byte checksum

Fleet Management Solutions provides complete mobile asset tracking and management solutions, from its vehicle tracking modules to its web-based mapping software.



### FMS Technical Support & Professional Services

Client satisfaction, results and continuous return on investment begin with quality training and installation support.

FMS works closely with every client to ensure system installation and deployment is complete and on schedule.

With an online knowledge base and truly helpful documentation you may never encounter a problem you can't solve yourself. But if you do, FMS is just a phone call away.



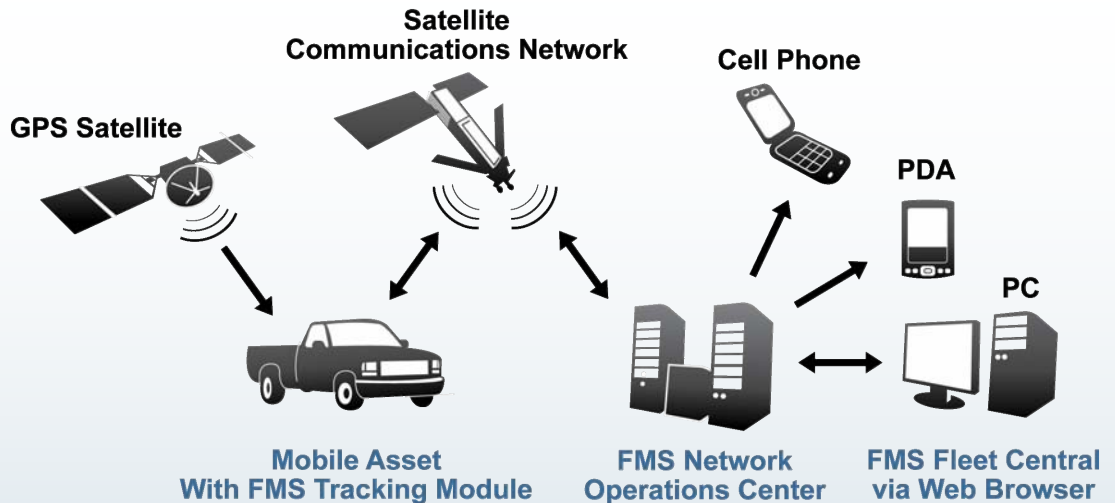
### Corporate Offices

Fleet Management Solutions  
3426 Empresa Drive  
San Luis Obispo, CA 93401

### Contact Us

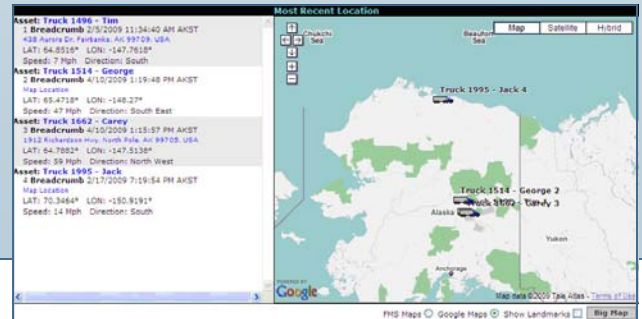
Toll-Free: 1-888-787-0508  
Tel: +1-805-787-0508  
Fax: +1-805-787-0509  
Email: info@fmsgps.com

[www.fmsgps.com](http://www.fmsgps.com)



## Real-Time Data From Anywhere, Anytime

FMS tracking modules maintain continuous GPS location, direction and speed information and combine that with vehicle performance data for complete mobile resource management. Fleet information is delivered from the vehicle via satellite, ensuring data delivery without need for cell towers and regardless of land geography. Data is received, stored and analyzed at the FMS network operations center and is accessed from the FMS hosted application, Fleet Central.



## Why Choose FMS?

Fleet Management Solutions, Inc. provides complete mobile asset tracking and management solutions to the Energy, Military, Government, Construction, Mining and Logistics industries. Solutions include vehicle tracking units, satellite airtime for data transmission, a web-hosted application for complete fleet management and professional services for successful deployment, on-going support, and quick return on investment.

- » Fleet Efficiency
- » Crew Monitoring

- » Driver Safety
- » Asset Security

Global Coverage, Two-way Satellite, Real-time, Rugged, Remote